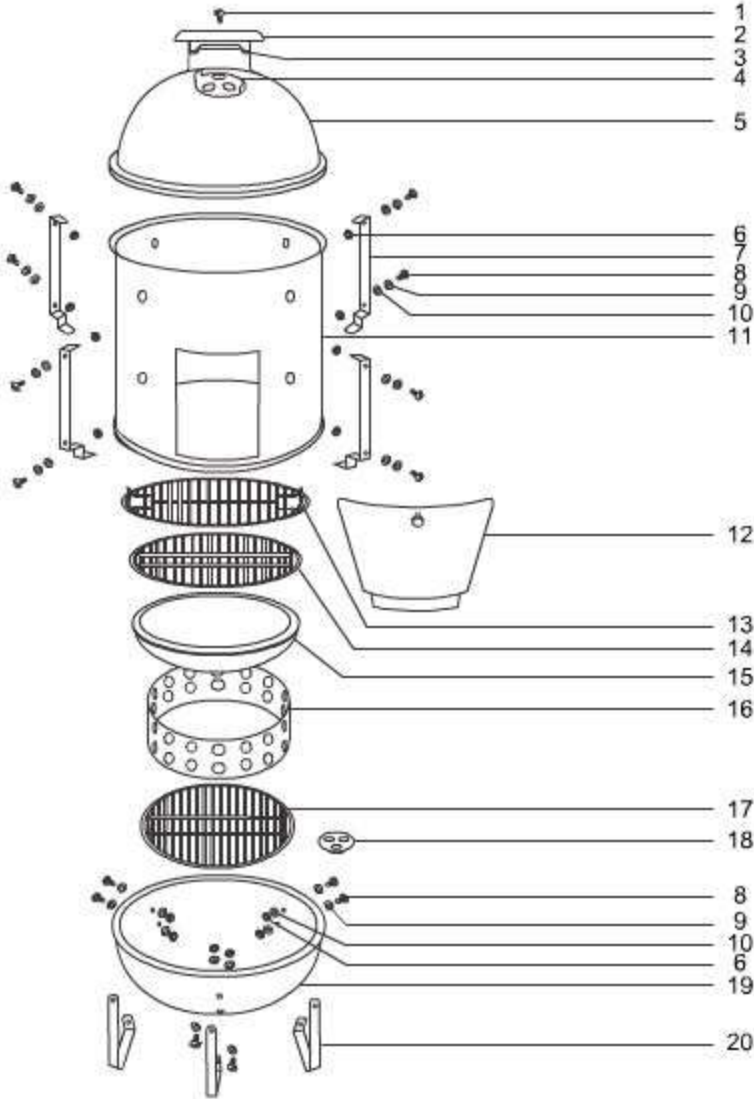


Weber Smokey Mountain Parts Schematics for Smokers made prior to 2000

Weber Smokey Mountain Model Number 2890

<http://www.WeberReplacementParts.com>



1 80671 Handle kit, charcoal, qty 1, '10

2 80671 Handle kit, charcoal, qty 1, '10

<u>3</u>	80671	Handle kit, charcoal, qty 1, '10
<u>4</u>	87401	Screw 1/4-20 x 5/8" slotted truss head, zinc
<u>4</u>	87505	Acorn nut 1/4-20 inch
<u>4</u>	87605	Flat washer 1/4 inch
<u>4</u>	63015	Damper kit, 18.5" Bar-B-Kettle & Smokey Mountain Cooker
<u>5</u>	63005	Lid assembly, 18.5" Smokey Mountain Cooker, black, '09
<u>6</u>	87503	Hex nut 1/4-20 inch, zinc
<u>7</u>	63020	Grill straps
<u>8</u>	87401	Screw 1/4-20 x 5/8" slotted truss head, zinc
<u>9</u>	877301	Flat fiber washer.265X.500X.062
<u>10</u>	87605	Flat washer 1/4 inch
<u>11</u>	85039	Center ring, 18" Smokey Mountain Cooker, black '14
<u>12</u>	63018	Door assembly
<u>12</u>	877401	Door fastener, Smokey Mountain Cooker
<u>12</u>	877503	Flat washer for Go-Anywhere Grills and Smokey Mountain Cooker Smoker.
<u>12</u>	877601	Lock washer (external tooth)

<u>12</u>	875505	Door knob
<u>12</u>	86901	10/24-inch hexagonal nut
<u>13</u>	80634	Cooking grate, 18.5", '10
<u>14</u>	80624	Lower cooking grate, 18.5" Smokey Mountain Cooker, '10
<u>15</u>	63024	Water pan, 18" Smokey Mountain Cooker, '09
<u>16</u>	63007	Charcoal chamber, 18.5" Smokey Mountain Cooker
<u>17</u>	63013	Charcoal grate, 18.5" Smokey Mountain Cooker
<u>18</u>	87605	Flat washer 1/4 inch
<u>18</u>	63015	Damper kit, 18.5" Bar-B- Kettle & Smokey Mountain Cooker
<u>18</u>	87401	Screw 1/4-20 x 5/8" slotted truss head, zinc
<u>18</u>	87505	Acorn nut 1/4-20 inch
<u>19</u>	63001	Bowl for 18.5" Smokey Mountain Cooker, black
<u>20</u>	75801	Leg for Smokey Mountain Cooker. 18-inch.